



53228 Thrust ball bearings, single direction

- Popular item

Thrust ball bearings, single direction

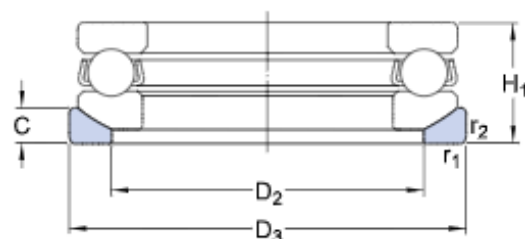
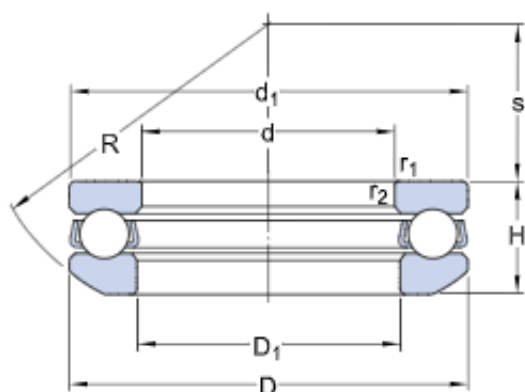
Bearing data

[Tolerances,](#)
table 1

Bearing interfaces

[Seat tolerances for standard](#)
[conditions,](#)
[Tolerances and resultant fit](#)

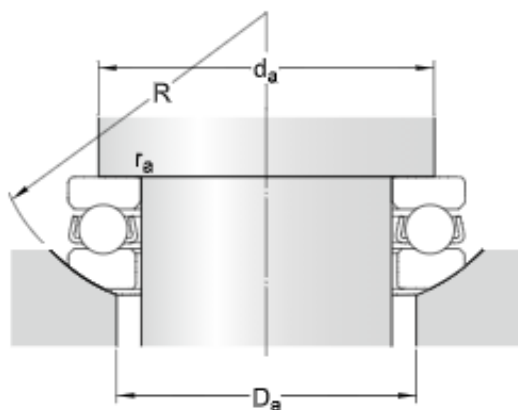
Technical specification



DIMENSIONS

d	140 mm	Bore diameter
D	200 mm	Outside diameter
H	48.6 mm	Height
H ₁	55 mm	Height bearing including seat washer
d ₁	≈ 197 mm	Outside diameter shaft washer
D ₁	≈ 143 mm	Inner diameter housing washer
D ₂	170 mm	Inner diameter sphered seat washer
D ₃	210 mm	Outside diameter sphered housing washer
C	17 mm	Height sphered housing washer
R	160 mm	Radius sphered housing washer
s	87 mm	Centre height housing washer sphere
r _{1,2}	min. 1 mm	Chamfer dimension washer

ABUTMENT DIMENSIONS



d_a min. 176 mm	Abutment diameter shaft
D_a max. 170 mm	Abutment diameter housing
r_a max. 1 mm	Fillet radius



CALCULATION DATA

C	190 kN	Basic dynamic load rating
C_0	620 kN	Basic static load rating
P_u	17.6 kN	Fatigue load limit
	1 300 r/min	Reference speed
	1 800 r/min	Limiting speed
A	2	Minimum load factor

MASS

5.45 kg	Mass bearing (including seat washer where applicable)
---------	---

ASSOCIATED PRODUCTS